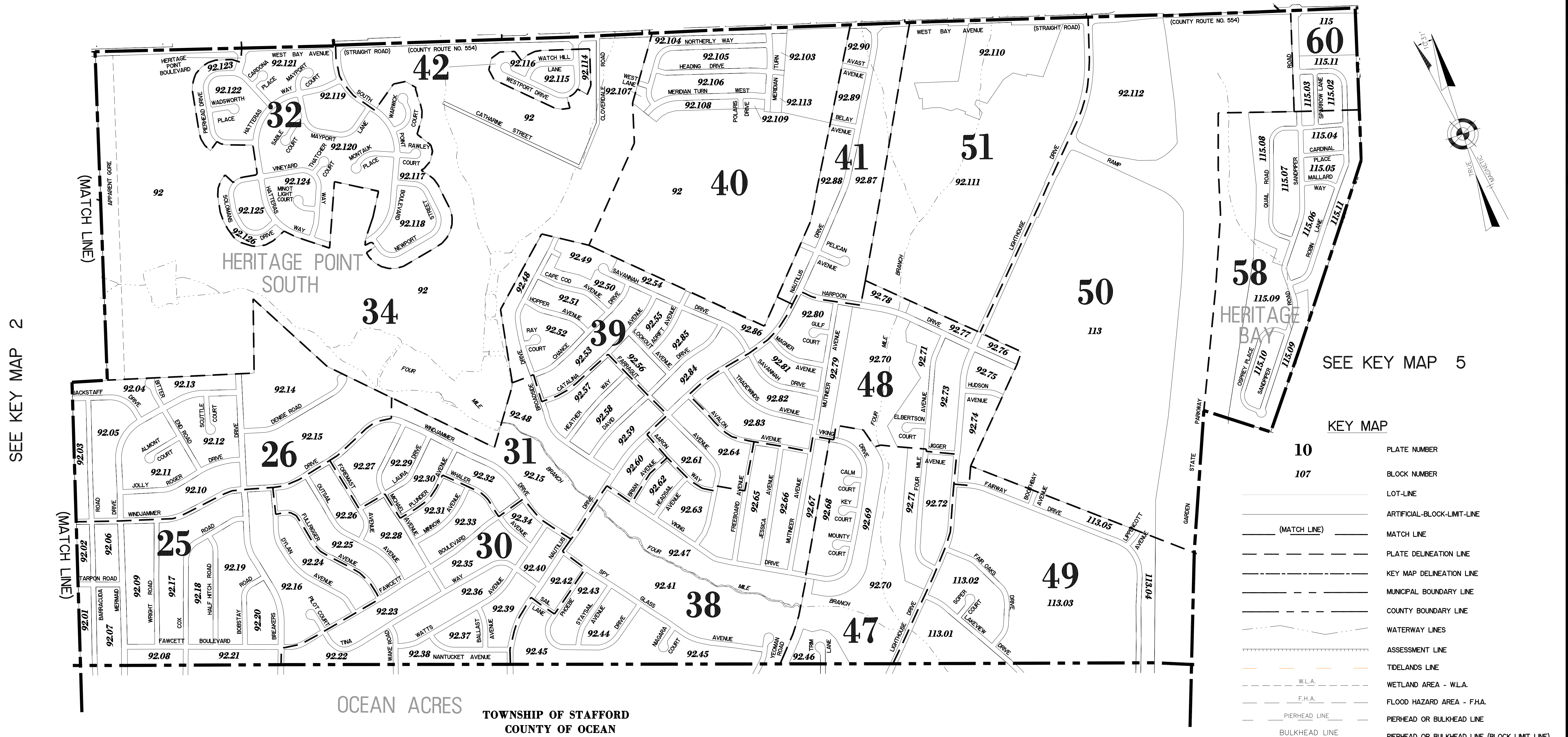


# KEY MAP 3

SEE KEY MAP 4

SEE KEY MAP 6



SEE KEY MAP 2

SEE KEY MAP 5

### KEY MAP

- |              |  |
|--------------|--|
| 10           | PLATE NUMBER                                 |
| 107          | BLOCK NUMBER                                 |
| (MATCH LINE) | LOT-LINE                                     |
| (MATCH LINE) | ARTIFICIAL-BLOCK-LIMIT-LINE                  |
| (MATCH LINE) | MATCH LINE                                   |
| (MATCH LINE) | PLATE DELINEATION LINE                       |
| (MATCH LINE) | KEY MAP DELINEATION LINE                     |
| (MATCH LINE) | MUNICIPAL BOUNDARY LINE                      |
| (MATCH LINE) | COUNTY BOUNDARY LINE                         |
| (MATCH LINE) | WATERWAY LINES                               |
| (MATCH LINE) | ASSESSMENT LINE                              |
| (MATCH LINE) | TDELANDS LINE                                |
| (MATCH LINE) | W.L.A.                                       |
| (MATCH LINE) | WETLAND AREA - W.L.A.                        |
| (MATCH LINE) | F.H.A.                                       |
| (MATCH LINE) | FLOOD HAZARD AREA - F.H.A.                   |
| (MATCH LINE) | PIERHEAD LINE                                |
| (MATCH LINE) | PIERHEAD OR BULKHEAD LINE                    |
| (MATCH LINE) | BULKHEAD LINE                                |
| (MATCH LINE) | PIERHEAD OR BULKHEAD LINE (BLOCK LIMIT LINE) |

## KEY MAP 3 TOWNSHIP OF BARNEGAT

OCEAN COUNTY NEW JERSEY  
SCALE: 1" = 500' DATE: 11-14-2003  
CRAIG F. REMINGTON LAND SURVEYOR LIC. NO. 23924

"THIS TAX MAP PLATE HAS BEEN DIGITALLY DRAWN USING COMPUTER-AIDED DRAFTING/DESIGN (CADD) AND COORDINATE GEOMETRY (COGO). IT IS BASED ON THE ORIGINAL DIGITALLY DRAWN TAX MAP PLATE BEARING THE OFFICIAL NEW JERSEY DIVISION OF TAXATION APPROVAL STAMP WITH APPROVAL DATE (7-31-2006) SERIAL NUMBER (896) AND SIGNATURES OF SIGNERS' JAMES J. COLL, CHIEF, LOCAL ASSESSMENT, SANTO C. DIDONATO, SUPERVISING FIELD REPRESENTATIVE. THIS TAX MAP PLATE HAS BEEN DIGITALLY UPDATED TO REFLECT CONDITIONS AS OF 12-10-2012. THE ORIGINAL DIGITALLY DRAWN TAX MAP PLATE WITH THE OFFICIAL APPROVAL STAMP IS ON FILE WITH THE TOWNSHIP OF BARNEGAT ENGINEER."

24 GA 28003300  
**REMINGTON, VERNICK & VENA ENGINEERS**  
9 ALLEN STREET, TOMS RIVER, NJ 08753  
(732) 286-9220, FAX (732) 505-8416  
WEB SITE ADDRESS: WWW.RVVE.COM

# KEY MAP 3